



MURSHIDABADREGION  
48, NAYA SARAK ROAD  
P.O.: BERHAMPORE  
DIST: MURSHIDABAD

TENDER NOTICE NO: 04 /2024-25

Date: 06.01.2025

**Notice inviting quotation/rate for Electrical work for new premises of our Indraprastha Branch**

Sealed quotations are invited for seeking rates of the wooden furniture as per sketched map attached herewith on or before **20.01.2025**.

The interested firms/ vendors can either submit their quotation in person to Regional Office Murshidabad (at Letter Receive Section) on any working day during office hours or may send by post so that the same reaches this office within the stipulated date. The quotations will be opened at R.O. on **21.01.2025 at 12:00 Noon**. The interested firms/ vendors may be present during opening of such quotations.

***Terms and conditions***

22. Quotation Rate will be considered on Lower Rate basis. Materials are to be supplied with a sharing basis of 60:40 between L1 and L2 bidder, provided L2 bidder agrees to supply at the lowest quoted rate. In case of dissent from L2 bidder, Bank's decision will be final.
23. Rates are to be quoted as per work schedule attached herewith.
24. Firms must have GST registration number.
25. After expiry of the above time schedule no quotation will be accepted.
26. Bank reserves the right to accept or cancel bid unilaterally without assigning any reason thereof, prior to placement of supply order/signing of contract thereby incurring any liability to the affected bidder(s) or any obligation to inform the affected bidder(s) for the cause of banks action and no further correspondence will be entertained regarding the matter.
27. All stipulated work is to be done in due time and any deviation/delay may attract penalty from original bill.
28. Selected vendor will have to finish the stipulated work in due time. Otherwise they will be debarred from getting order for their other selected items and/or their further participation in the tender process may be suspended.
10. The rate/s will be inclusive of delivery charges & others but exclusive GST.
11. Materials will be rejected if any defect/deviation in quality from specification is found as given in tender process.

  
Regional Manager



Propose Annexure-I  
(Ground floor & 1st floor)

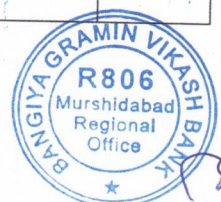
SL. NO	ITEM DESCRIPTION	UNIT	QT	RATE (RS.)	AMOUNT (RS.)
1	<b>SWITCH FUSE UNIT</b> Supply and fixing of main Switch Fuse Unit (IS : 13947) with re-wearable type fuse in sheet steel enclosure with cable end box, mounted on M.S. frame/ M.S. legs on wall. The rate shall be inclusive of supply of all materials, making holes, mending good damages & making connection etc. as required.				
1.1	<b>100A TPN SFU (for Supplies incomer)</b>	Each	1		
2	<b>ON LOAD CHANGE OVER SWITCH</b> Supply & fixing of 100A, TPN change over switch (IS:4064) in sheet steel enclosure on MS angles/ legs o wall. The rate shall be inclusive of supply of all materials, making holes mending good the damages & making connection etc. as required.	Each	1		
3	<b>SUBMAIN WIRING</b> Submain wiring with following sizes Finolex make 1100 V grade, single core, PVC insulated flexible copper conductor cable (IS:694) through suitable size medium duty PVC. Conduit (ISI marked embossed on conduit surface) complete with junction box, circular box, elbows, bends and other accessories on surface above false ceiling or concealed by chase cutting on wall as per condition, mending good all damages to original finish, interconnection etc. as per required to be complete in all respect.				
3.1	With 2 nos. 10sq.mm. + 1 No. 6sq.mm. PVC insulated Copper wire in 20mm dia. PVC conduit ( main Meter / switch to change over / main DB)	Mtr	105		
4	<b>CASH COUNTER POINT WIRING</b> Point wiring with 1100 V grade 2 Nos. single core 1.5 sq.mm. for common neutral by looping method common earth by looping method) PVC insulated flexible FRLS copper conductor cable (IS:694) through suitable size PVC conduit (ISI marked embossed on conduit surface) complete with junction box, circular box, elbows, bends, couplers and other accessories on surface above false ceiling or concealed by chase cutting on wall from light & fan switch board to light, fan & 6A socket outlet on the same switch board or separately mounted switch board. The work includes supply and fixing of all materials such as modular type 6A switch for each light and fan point, 6A 2/3 pin shuttered socket outlet with switch, 3 plate ceiling rose/ angle or batten holder etc. as required				
4.1	1 Light & fan control by 1 switch	Each	4		
4.2	2 nos,2/3 pin 6A switch shuttered socket outlet with switch on light & fan switch board	Each	2		
4.3	2x6A 2/3 pin shuttered socket with individual controlling switch on light/ fan switch board for cash counter.	Each	2		
4.4	1x16A 2/3 pin shuttered with switch on separate switch board other than light & fan switch board cash counter.	Each	2		
4.5	Wall mounted bracket fan point	Each	2		
5	<b>MCB DISTRIBUTION BOARD</b> Supply, installation testing and commissioning of MCB Distribution Board in sheet steel enclosure with double door and suitable for mounting on surface wall by the Electrical Layout complete in all respect, (Havells / HPL make)				
5.1	<b>MAIN DISTRIBUTIION BOARD (L- DB)</b> 8 way SPN MCB DB complete with MCBs : <b>Incoming</b> : 1 nos. : 240V, 63A DP MCB <b>Outgoing</b> 4 nos. : 240V, 32A SP MCB, 2 nos. : 240V, 10A, SP, MCB ,Complete board as above.	Each	2		
6	<b>SUPPLY &amp; INSTALLATION OF LIGHT FITTINGS :</b>				



SL. NO	ITEM DESCRIPTION	UNIT	QT	RATE (RS.)	AMOUNT (RS.)
6.1	Supply installation, testing and commissioning of 1x24W T5 light fittings with light on wall/ ceiling including supplying and fixing of 2nos. M.S. clamps or hard wood round block property shellac polished with 2x20mm dia MS pipe suitable for wall/ ceiling mounting including interconnection between light points and fittings 3 nos. single core/ 3core 1.5sq.mm. PVC insulated flexible FRLS copper conductor cable etc. as required	Each	20		
6.2	Supply, installation, testing and commissioning of 1x10 Watt light fittings installation the cash counter.	Each	2		
7.2	Supply and fixing of fan hook after cutting ceiling and welding with main reinforcement including mending good all damages to original finish	Each	10		
8	<b>INDUSTRIAL TYPE SOCKET AND PLUG DB</b> Supply and installation of industrial type socket and match plug with controlling MCB in sheet enclosure for UPS incoming outgoing only : (Havells/HPL make)				
8.1	32A, 3 pin industrial type socket with matching plug and 25A, DP MCB control including interconnection (for UPS incoming/ outgoing) (Havells/HPL make)	Each	4		
9	<b>UPS TO UPS CHANG OVER</b> Supply & fixing of 32ADP on load change Over Switch in sheet steel enclosure on M.S. angles/ legs on wall. The rate shall be inclusive of supply of all materials, making holes, mending good the damages & making connection etc. as required. (Havells/HPL make)	Each	2		
10	<b>COMPUTER DISTRIBUTION BOARD (CDB)</b> Supply and installation of metallic single door MCB distribution Board with MCB having breaking capacity of 10KA (minimum) and complete with busbar, interconnection, mounted on flat iron frame on wall/ flushed with finished wall by chase cutting, mending good to original finish etc. as required name plate & number of DBs are to be fixed up on front door of DBs for their identification. (Havells/HPL make)				
10.1	SPN 8 way consumer unit single door MCB DB complete with busbar and the following MCBs: <b>Incoming</b> 1 nos. 240V,40A DP MCB <b>Outgoing</b> - 6nos. 240V, 10A, SP MCB	Each	2		
11	<b>SUBMAIN WIRING</b> Submain wiring with 1100V grade. Single core PVC insulated flexible copper conductor cable (IS:694) through suitable size medium duty PVC conduit (ISI mark embossed on conduit surface) and conduit accessions party on surface (above false ceiling ) with MS bar saddles. Partly through portion and party concealed in wall/ embedded. Mending good all damages etc. as required to be completed in all respect				
11.1	From plug socket D.B. & from outgoing/incoming plug socket DB with CDB 2nos. 4sq.mm. + 1no. 2.5sq.mm. PVC insulated flexible FR copper conductor cable in suitable size PVC conduit.	Mtr.	70		
11.2	From (CDB) DB to power board with 3nos. 1.5sq.mm. PVC insulated flexible FR copper conductor cable is suitable size PVC conduit.	Mtr.	250		
12	<b>COMPUTER SOCKET OUTLET CLUSTER POINT WIRING</b> Computer socket outlet cluster point wiring with 1100 V grade 3 nos. single core 2.5 sq. mm. PVC insulated flexible FRLS copper conductor cable confirming to IS : 694 through suitable size partly concealed in wall/ embedded in floor, partly on surface above false ceiling and party through partition or through flexible conduit from DB to socket clusters in 1 (one) circuit connection by looping method. The work includes supply and flexing of socket out let cluster component/ eachs as detailed below:- Each computer socket outlet cluster comprising the following : 3 nos. 6A 2/3 pin modular type shuttered socket. (below table) 1 nos. 20A modular type controlling switch. (below table)	Each	8		



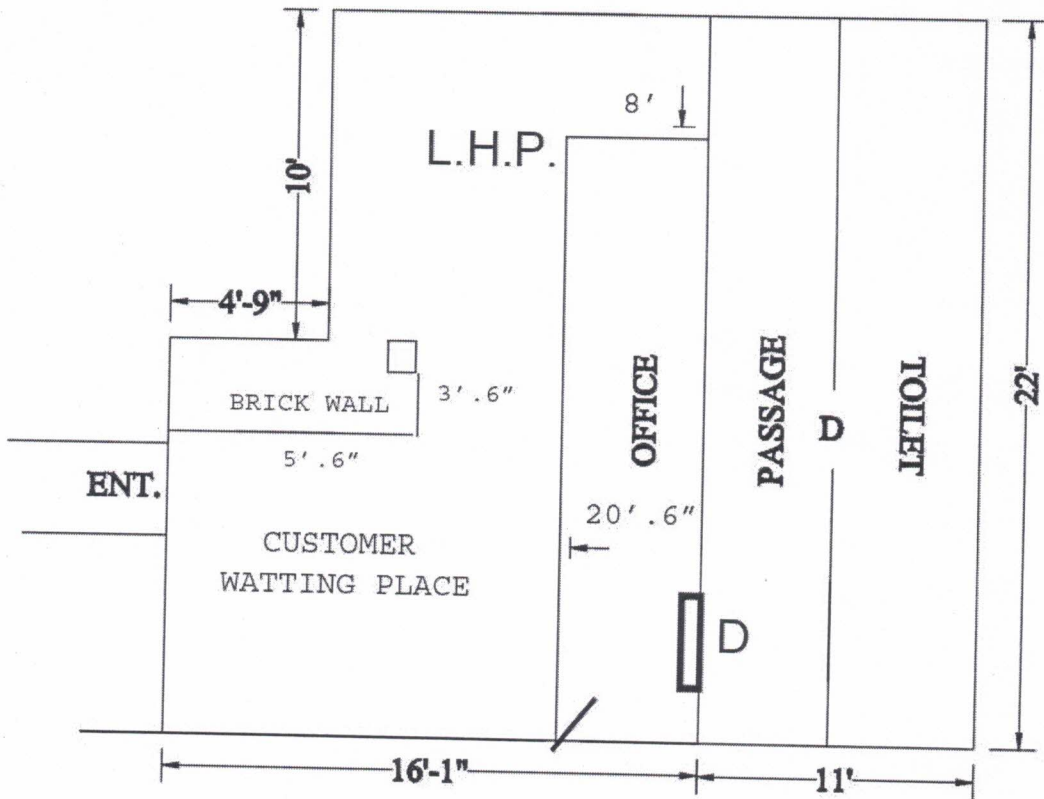
<u>SL. NO</u>	<u>ITEM DESCRIPTION</u>	<u>UNIT</u>	<u>QT</u>	<u>RATE (RS.)</u>	<u>AMOUNT (RS.)</u>
	1nos. 10A modular type intrigrating lamp (below table) 1 nos. modular type Front plate of suitable size. 1 nos. modular type PVC box of suitable size.				
13	<b><u>EARTHING (COMPUTER)</u></b> Earthing the installation as per I.E. rules confirming to IS:3043-1987 or its latest amendment by making earth station with 450mm. X 6mm. (minimum ) thick copper plate electrode installed level after preparation of ground with charcoal and salt and connecting the earth lead- in- wire by suitable length double nuts and washers copper lugs including supply and fixing of 50mm. dia. Partly perforated G.I. pipe with funnel for watering arrangement. The copper earth lead-in-strip shall be PVC sleeved/ insulated throughout the total length and the underground portion to be laid through suitable size heavy duty rigid PVC conduit etc.	Each	1		
14	<b><u>SUPPLYING AND LAYING OF PVC. CONDUIT.</u></b> Supplying and laying of 20mm. dia. heavy duty rigid PVC conduit complete with junction box. circular box, elbows, bends, couplers and other accessories as required on wall embedded in floor or on surface or through partition. The work includes making good etc. as required.	Mtr	150		
15	<b><u>COMPUTER DATA WIRING</u></b> Supply and laying of CAT – 6 cables through pre-laid rigid PVC conduit as shown in the drawing or otherwise as directed by the consultant from server to HUB, HUB to Computer Data Socket including interconnection mending good, etc. as required.	Mtr	305		
16	<b><u>COMPUTER DATA SOCKET</u></b> Supply and fixing on wall/ furniture/ portion recessed type D-Link make Computer data socket (RJ 45) with mounting box & front plate, mending good etc. as required.	Each	8		
17	<b><u>INTERCONNECTION</u></b> Supply laying testing and commissioning of following 1.1 KV grade PVC insulated copper conduct cable (from meter and DG to switch Fuse Unit) in flexible conduit. The rate shall be inclusive of supply of all materials making interconnection wall salb cutting & making good the same.				
17.1	4x10 sq.mm. PVC wire (for WBSEB incomer)	Each	1		
18	<b><u>SUPPLY AND LAYING OF CABLE</u></b> Supply & laying of 1.1 KV grade (IS:7098) following size PVC insulated and PVC sheathed armoured aluminum conductor cables of Finolex/ Polycab/ CCI/ Nicco make on wall/ column including supply & fixing of cable end connections, M.S. clamps/ galvanized bar saddles @ 300 mm apart, making holes and mending good damages, painting etc. as required.				
18.1	4 core 25 sq.mm. (from main switch to P-DB)	Mtr.	45		
19	<b><u>MCB DISTRIBUTION BOARD</u></b> Supply, installation testing and commissioning of following MCB Distribution Board (L&T/MERLIN GERIN/ABB) in sheet steel enclosure with Double door and suitable for mounting on wall by Surface and flushed with finished level to the position shown in the Electrical Layout complete in all respect, mending good all damages to the original finish, painting, interconnection, of all MCBs should be 10 KA (minimum) etc. as required.				
19.1	<b><u>A C Supply Power Distribution Board (AC-DB)</u></b> TPN 4 way vertical type MCCB DB complete with busbar and following MCCB/ MCBs : <b>Incoming</b> 1no. 415V, 63A 4P MCB (25KA min) <b>Outgoing</b> : 6nos. 240V 32/25A Sp MCBs/ 6nos. 240V 20/16ASP MCBs	Each	2		
19.2	Supply, installation testing and commissioning of following 200A copper 4 way busbar All connections etc. as required.	Each	1		
20	<b><u>A.C. POWER POINT</u></b> A.C. Power point wiring from Main P-DB to A.C. Power points with 1100V grade following rating (Green colour for earthing) PVC insulated flexible FR copper				





<u>SL. NO</u>	<u>ITEM DESCRIPTION</u>	<u>UNIT</u>	<u>QT</u>	<u>RATE (RS.)</u>	<u>AMOUNT (RS.)</u>
	conductor cable through suitable size MS conduit (ISI marked embossed on conduit surface) complete with junction box, circular box, elbows bends, couplers and other accessories surfaced on wall above false ceiling or concealed by chase cutting on wall, 'North-West' make A.C. power unit having suitable rating socket with plug, plug-top & starter in sheet steel enclosure complete with interconnection, mending good all damages to original finish painting etc. as required. All connections of wires to be done by means of 'Wago' type connections.				
21.1	With 2 nos. 4 sq.mm + 1no. 2.5 sq.mm (green colour for earth) PVC insulated copper wire in 20mm dia. PVC conduit/ casing capping.	Each	6		
22	<b>EARTHING (GENERAL)</b> Earthing the installation as per I.E. rules confirming to IS:3043-1987 or its latest amendment by making earth station with 50mm. X 3mtr. (minimum ) thick GI pipe electrode installed level after preparation of ground with charcoal and salt and connecting the earth lead- in- wire by suitable length double nuts and washers copper lugs including supply and fixing of 50mm. dia. Partly perforated G.I. pipe with funnel for watering arrangement. The copper earth lead-in-strip shall be PVC sleeved/ insulated throughout the total length and the underground portion to be laid through suitable size heavy duty rigid PVC conduit (ISI mark embossed on conduit surface) at an average depth of 500mm below ground level. The earthing installation provided with 300mmx300mm and 300mm	Each	1		
Total – Excluding, GST.					

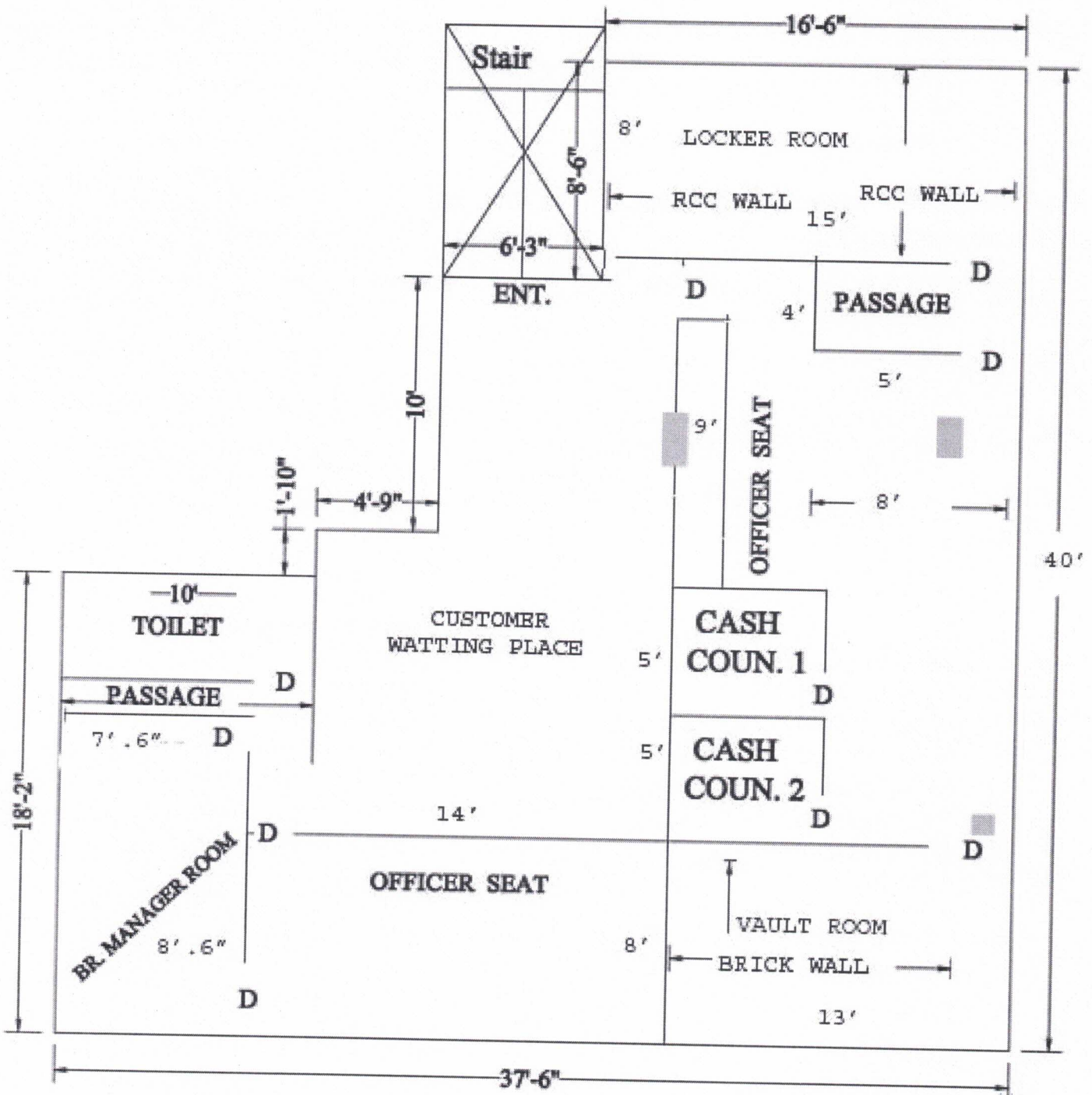




## PROPOSED GROUND FLOOR PLAN

# BGV BANK INDRAPRASTHA BRANCH





## PROPOSED 1st FLOOR PLAN



BGV BANK INDRAPRASTHA BRANCH