



MURSHIDABADREGION
48, NAYA SARAK ROAD
P.O.: BERHAMPORE
DIST: MURSHIDABAD

TENDER NOTICE NO: 02 /2024

Date: 09.10.2024

Notice inviting quotation/rate for furniture work for new premises of our Sompara and Madhupur Branch under Murshidabad Region.

Sealed quotations are invited for seeking rates of the wooden furniture as per sketched map and work schedule attached herewith on or before **29.10.2024**.

The interested firms/ vendors can either submit their quotation in person to Regional Office Murshidabad (at Letter Receive Section) on any working day during office hours or may send by post so that the same reaches this office within the stipulated date. The quotations will be opened at R.O. on **30.10.2024 at 12:00 Noon**. The interested firms/ vendors may be present during opening of such quotations.

Terms and conditions:

15. Quotation Rate will be considered on Lower Rate basis. Materials are to be supplied with a sharing basis of 60:40 between L1 and L2 bidder, provided L2 bidder agrees to supply at the lowest quoted rate. In case of dissent from L2 bidder, Bank's decision will be final.
16. Rates are to be quoted as per work schedule attached herewith.
17. Firms must have GST registration number.
18. After expiry of the above time schedule no quotation will be accepted.
19. Bank reserves the right to accept or cancel bid unilaterally without assigning any reason thereof, prior to placement of supply order/signing of contract thereby incurring any liability to the affected bidder(s) or any obligation to inform the affected bidder(s) for the cause of banks action and no further correspondence will be entertained regarding the matter.
20. All stipulated work is to be done in due time and any deviation/delay may attract penalty from original bill.
21. Selected vendor will have to finish the stipulated work in due time. Otherwise they will be debarred from getting order for their other selected items and/or their further participation in the tender process may be suspended.
10. The rate/s will be inclusive of delivery charges & others but exclusive GST.
11. Materials will be rejected if any defect/deviation in quality from specification is found as given in tender process.

Regional Manager.

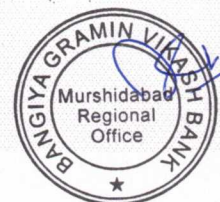
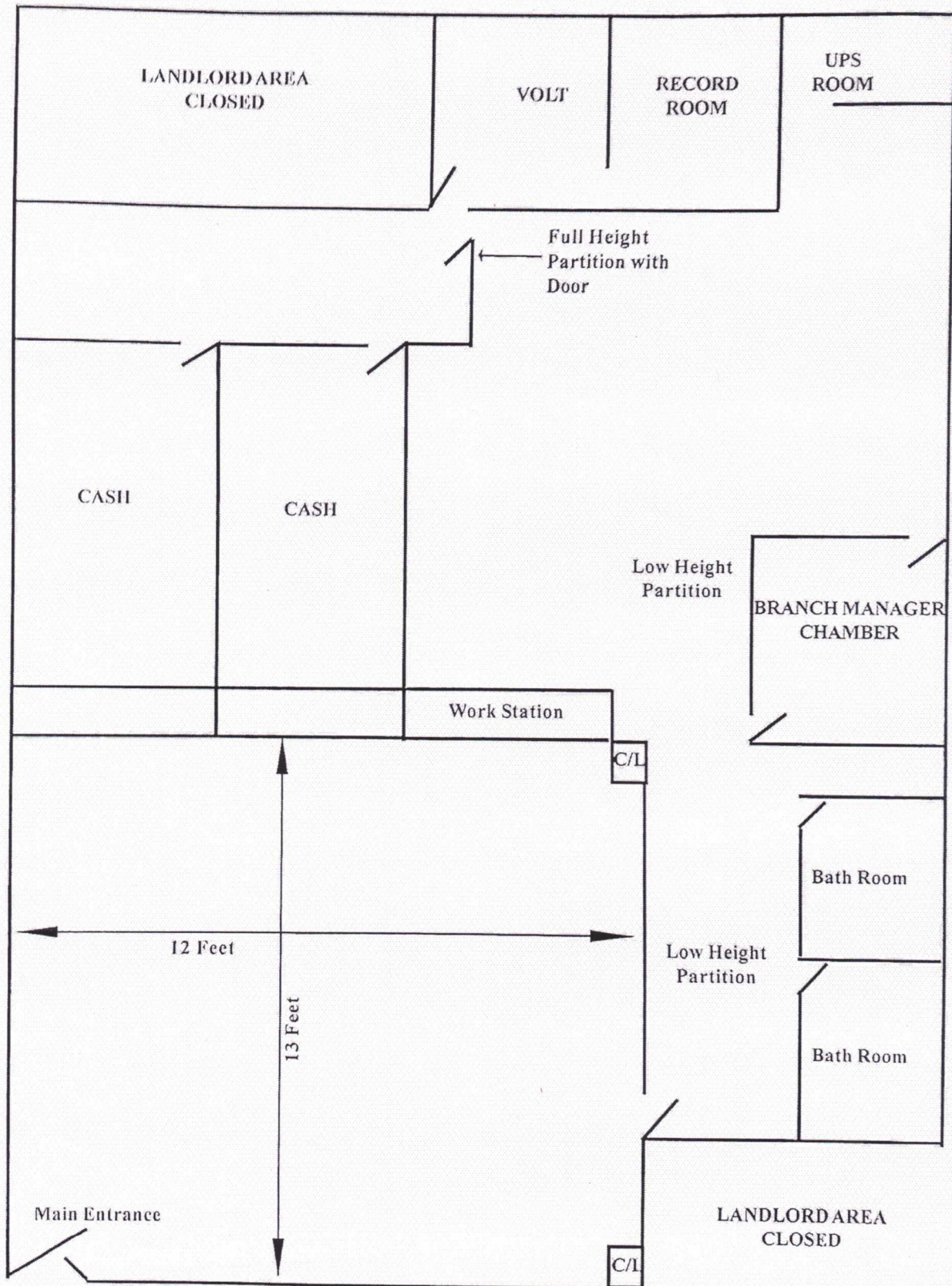


BUDGETARY ESTIMATE WOODEN ,FURNITURE AND INTERIOR WORK AT SOMPARA BRANCH

S.L.	PARTICULAR	QUANTITY	RATE	AMOUNT
1	Cash cabin: Providing and fixation in position cash counter cash cabin providing and fixing in position cash counter station comprising of cash cabin work station, customer writing top finished with mirror granite slab of approved shade including mounding piece , fixed with chemical adhesive and BWR commercial board fitting and bank approved colour lamination with aluminium grill cover .			
a	Supply of new hard wooden frame attached 12mm Modi Co. clear glass fitting (public position) cash cage.	31sft.		
b	Cash Cover: Wooden frame ground portion 3.5' H partition both side and back side BWR, commercial board fittings and lamination pasting attached under portion aluminium grill cover , attach door . Partition Hight 7.5 Ft and door measurement 6ft * 2ft including cash cabin back enclosure door Godrej lock(cash counter door) fitting fixing attached bank approved colour lamination pasting. 6'ft(h)x2'ft(L) 2nos. door.	147sft.		
c	Cash counter desk : Supply of new cash counter desk 18 mm DWR commercial board structure right side 3 drawer , desk and drawer lamination pasting. Bank approved colour and public passage front side BWR . Commercial board cover attached bank approved colour lamination pasting inside desk measurement 2.5Ft H,9Ft 6inch , 2.5Ft,cash cabinet measurement and public, writing top 3.5Ft with hardware ornaments fittings best quality hinge handle , best quality lock fittings lock fitting complete polish and paint.	9 RFT.		
d	Supply of new granite fittings for cash counter top and ledger counter top side.	20sft.		
2	Work Station (Ledger Counter) :- Supply of new ledger counter BWR commercial board structure one drawer and one hinge door, supply of new granite fittings public passage cover desk top and face bank approved colour lamination pasting with best quality hinge handle best quality lock fittings inside synthetic paint fitting fixing complete with polish. Ledger counter measurement 2.5FtH , 10Ft, 2.5Ft.	10 RFT		
3	Low height partition:- Providing & fixing hard wood section without sap & joint at maximum 2'ft c/c both horizontally & vertically treated with pentaphine pale from STP as anti termite & fire retardant. To be fixed screwed to the floor & ceiling with MS cleats. The framework will be clad with 6 mm thick BWR plywood both sides & finished with thick approved shed laminate as per design approved. Low height partition for branch area made of 2"x2" size quality seasoned wooden frame of 3.5Ft hight both sides covered by6mm ISI Brand Resin Bonded, Termit Resistance and Water Resistance Board	52.5 sft.		
4	Branch Manager Cabin Low height partition:- Providing & fixing hard wood section without sap & joint at maximum 2'ft c/c both horizontally & vertically treated with pentaphine pale from STP as anti termite & fire retardant. To be fixed screwed to the floor & ceiling with MS cleats. The framework will be clad with 6 mm thick BWR plywood both sides & finished with thick approved shed laminate as per design approved. Low Height Partition for Branch Manager made of 2"x2" size quality seasoned wooden frame of height (H) 3 feet x (L) 12 feet both sides covered by6mm ISI Brand Resin Bonded, Termit Resistance and Water Resistance Board, Uper side frame attached (H) 1 feet. x (L) 12 feet 12mm Modi Co. clear glass fitting work.	64 sft.		
5	Low height Swing Door (3 nos):- Providing & fixing solid core flash door of 35mm. thick finish with approved colour laminate. Solid flash door finished with prescribed shades of laminates as per design.attached with hinge and tower bolt.	42 sft.		
6	Full Height Door (1 nos):- Providing & fixing solid core flash door of 35mm. thick finish with approved colour laminate. Solid flash door finished with prescribed shades of laminates as per design.attached with hinge and Godrej Door Closer and Godrej Mortise Lock.	21 sft.		
7	Full height partition:- Providing & fixing hard wood section without sap & joint at maximum 2'ft c/c both horizontally & vertically treated with pentaphine pale from STP as anti termite & fire retardant. To be fixed screwed to the floor & ceiling with MS cleats. The framework will be clad with 6 mm thick BWR plywood both sides & finished with thick approved shed laminate as per design approved. Low height partition for branch area made of 2"x2" size quality seasoned wooden frame of 7.5Ft hight x 8Ft. Length both sides covered by6mm ISI Brand Resin Bonded, Termit Resistance and Water Resistance Board	60 sft.		
8	Supply of new 8mm clear glass fitting with wooden bar column for ledger counter top side.	10 sft.		



PROPOSED SKETCH MAP OF
BANGIYA GRAMIN VIKASH BANK, SOMPARA BRANCH
DIST. MURSHIDABAD



BUDGETARY ESTIMATE WOODEN ,FURNITURE AND INTERIOR WORK AT MADHUPUR BRANCH

S.L.	PARTICULAR	QUANTITY	RATE	AMOUNT
1	Cash cabin: Providing and fixation in position cash counter cash cabin providing and fixing in position cash counter station comprising of cash cabin work station, customer writing top finished with mirror granite slab of approved shade including mounding piece , fixed with chemical adhesive and BWR commercial board fitting and bank approved colour lamination with aluminium grill cover .			
a	Supply of new hard wooden frame attached 12mm Modi Co. clear glass fitting (public position) cash cage.	31sft.		
b	Cash Cover: Wooden frame ground portion 3.5' H partition both side and back side BWR, commercial board fittings and lamination pasting attached under portion aluminium grill cover , attach door . Partition Hight 7.5 Ft. and door measurement 6ft * 2ft including cash cabin back enclosure door Godrej lock(cash counter door) fitting fixing attached bank approved colour lamination pasting. 6'ft(h)x2'ft(L) 2nos. door.	179 sft.		
c	Cash counter desk : Supply of new cash counter desk 18 mm DWR commercial board structure right side 3 drawer , desk and drawer lamination pasting. Bank approved colour and public passage front side BWR . Commercial board cover attached bank approved colour lamination pasting inside desk measurement 2.5Ft H,9Ft 6inch , 2.5Ft,cash cabinet measurement and public, writing top 3.5Ft with hardware ornaments fittings best quality hinge handle , best quality lock fittings lock fitting complete polish and paint.	9 RFT.		
d	Supply of new granite fittings for cash counter top and ledger counter top side.	20sft.		
2	Work Station(ledger counter):- Supply of new ledger counter BWR commercial board structure one drawer and one hinge door, supply of new granite fittings public passage cover desk top and face bank approved colour lamination pasting with best quality hinge handle best quality lock fittings inside synthetic paint fitting fixing complete with polish. Ledger counter measurement 2.5FtH , 10Ft, 2.5Ft.	10 RFT		
3	Low height partition:- Providing & fixing hard wood section without sap & joint at maximum 2'ft c/c both horizontally & vertically treated with pentaphine pale from STP as anti termite & fire retardant. To be fixed screwed to the floor & ceiling with MS cleats. The framework will be clad with 6 mm thick BWR plywood both sides & finished with thick approved shed laminate as per design approved. Low height partition for branch area made of 2"x2" size quality seasoned wooden frame of 3.5Ft hight both sides covered by6mm ISI Brand Resin Bonded, Termit Resistance and Water Resistance Board	15sft		
4	Branch Manager Cabin Low height partition:- Providing & fixing hard wood section without sap & joint at maximum 2'ft c/c both horizontally & vertically treated with pentaphine pale from STP as anti termite & fire retardant. To be fixed screwed to the floor & ceiling with MS cleats. The framework will be clad with 6 mm thick BWR plywood both sides & finished with thick approved shed laminate as per design approved. Low Height Partition for Branch Manager made of 2"x2" size quality seasoned wooden frame of height (H) 3 feet x (L) 12 feet both sides covered by6mm ISI Brand Resin Bonded, Termit Resistance and Water Resistance Board, Uper side frame attached (H) 1 feet. x (L) 12 feet 12mm Modi Co. clear glass fitting work.	64 sft.		
5	Low height Swing Door (3 nos):- Providing & fixing solid core flash door of 35mm. thick finish with approved colour laminate. Solid flash door finished with prescribed shades of laminates as per design.attached with hinge and tower bolt.	42 sft.		
6	Full Height Door (2 nos):- Providing & fixing solid core flash door of 35mm. thick finish with approved colour laminate. Solid flash door finished with prescribed shades of laminates as per design.attached with hinge and Godrej Door Closer and Godrej Mortise Lock.	39 sft.		
7	Supply of new 8mm clear glass fitting with wooden bar column for ledger counter top side.	10 sft.		



PROPOSED SKETCH MAP OF BANGIYA GRAMIN VIKASH BANK
MADHUPUR BRANCH, DIST. MURSHIDABAD

